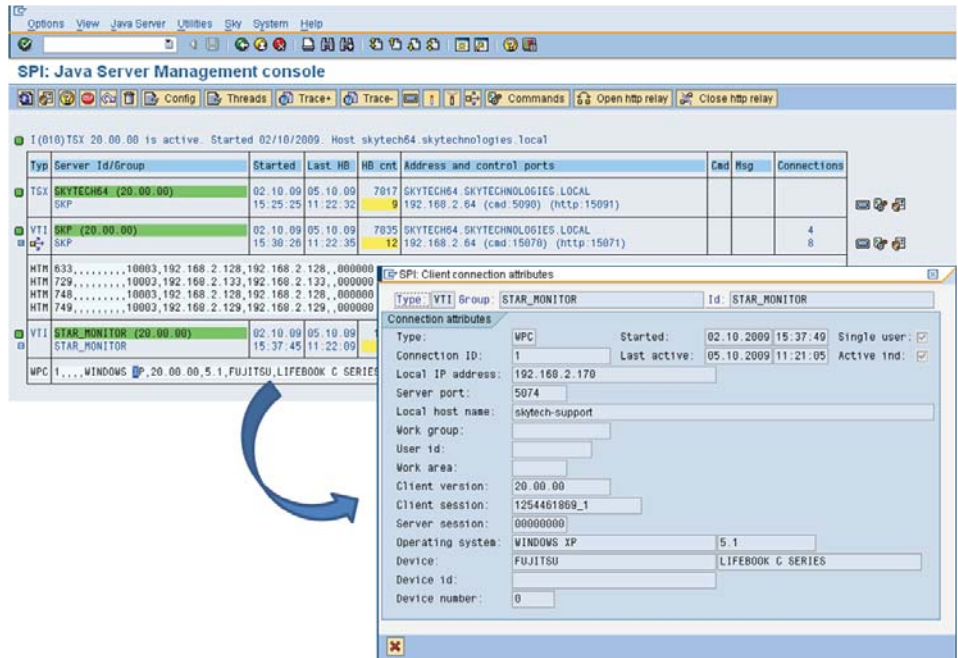


This technical publication is distributed with the Sky software release. Its aim is to effectively communicate the new features, technical knowledge and the strategic direction of the Sky software suite.

- Client Connection Tracking
- User Level Profiling
- Windows High Resolution
- Extended Binary Object Support
- What's in the pipeline?
- Release 20 summary video and software

Client Connection Tracking

The SkyMobile presentation clients now publish operating system, device make/model and session information to SAP via the heartbeat mechanism. This means that more system and cross reference information is available for device management and data profiling i.e. you can see exactly who and what is connected to each Java Server. Sky will build on this capability in future releases, providing a comprehensive statistical and summary reporting capability. Right now, the Java Server management console in SAP (YECJ) displays all current client connections and their attributes:



Quick News

SAP host call optimisation:

By default, release 20 will optimise the data transferred between a Java Server and SAP for real time calls i.e. it only passes the minimum amount of data to improve network and processing performance. Sky's benchmarking has shown a average performance improvement of 50%. This is particularly important for BlackBerry Smart Phone devices, where network services are relatively constrained i.e. routed through a BES.

Camera/Video integration:

Sky have supplied a new SOF (Standard Object Framework) object for Windows that launches the native device camera/video and provides functionality to manage the captured binary. In this way, camera functionality can be easily integrated into SkyMobile applications without writing code.

User Level Profiling

The Data Object Profiler now supports user and work group level criteria i.e. synchronise data specifically for the user logged onto the device. This means that mobile devices that are shared between different users can dynamically alter their data profile depending on who is logged on at the time. Previously, synchronisation was reliant on the Java Server Group and Id which associated data at the device level and made 'shared' devices difficult to implement.

The Work Group and User Id attributes in the SkyMobile session must be populated by a custom Java exit using supplied API's. There is also new support for asynchronous call back processing e.g. after a logon, trigger a heartbeat request to update the connection details in SAP and then automatically start a data download (using the new user profile) when it is complete.

Quick News Cont...

Client/Server performance traces:

There are new Presentation Client and Java Server performance traces which write performance information to the log files to highlight bottlenecks i.e. where the most time is being spent. This in conjunction with the SAP performance trace option provides all the low level information necessary and insight into local database table and custom exit calls.

New input aids:

New QWERTY key pad and time entry and duration input aids are available for the Windows Presentation Client. All input aids have also been updated to allow direct value input and cursor positioning.

Table page navigation aid:

Screen table control's can be configured to utilise a page navigation aid in preference to a scroll bar i.e. a list of available pages along the bottom of the table, similar to Google. You can control the number of page numbers displayed and their 'selection area' size.

Cascading updates:

The SAP add-in now provides new functions to cascade Data Object logical deletion and timestamp updates. This considerably simplifies ABAP code and in some cases fully automates the processing. A new cascade delete option on the Data Object definition and new ABAP SDK commands are available.

Automatic data retention:

You may now configure a retention period (in days) against a Data Object or Local Database table (LDB). The SkyMobile housekeeping function then automatically analyses and deletes data using this configuration and the timestamp/logical deletion indicator values.



The new client connection information functionality implemented in release 20 provides the technical capability to dynamically register Work Groups and User Id's and cross reference them to specific Java Server's. The instance criteria of a data profile now include the ability to define Work Group and User id combinations.



Windows High Resolution

Support has been added to the SkyMobile Windows Presentation Client (WPC) to automatically detect and support devices with high resolution screens.

The layout managers have been enhanced to provide the best displays possible i.e. make the best use of the screen size and graphical resolution.

This considerably improves the sharpness and quality of the Windows SkyMobile screens to that of the BlackBerry, Android and iPhone devices. However, it does mean that graphics must be designed for the resolution in mind.

Previously, Windows defaulted to lower resolution if it was not explicitly told to use high or the device did not support it. The result was a more grained display which was ok for most 'form' driven applications, but became obvious with more 'graphical' applications.

Extended Binary Object Support

The synchronisation and control of binary objects is significantly improved in release 20. You can now include Binary Objects in Data Object definitions i.e. link files directly with database data and synchronise them together. This is achieved by using the new Binary Object classification functionality to allocate an alternate reference to the object e.g. WORK_ORDER/10080925; this can then be related directly to a Data Object table field and data value. Once Binary Objects are associated with a Data Object, they fall under total control of the Data Object processing (i.e. synchronisation and data management) and are no longer controlled individually by the Binary Manager.

Quick News Cont...

GPS tracking:

A GPS tracking table is provided as standard with SkyMobile that automatically synchronises GPS data with SkyMobile. Standard SOF (Standard Object Framework) objects are available for Windows to integrate direct GPS calls with SkyMobile applications. This provides the framework for release 21 which will include graphical device tracking via 'Google Maps'.

New Splash Screen:

The SkyMobile start up 'splash' screen now displays more progress information to give users interactive feedback and a much better understanding of what is going on. This is particularly useful the first time the application is installed.

Enhanced XML

SkyConnect Cupid output XML generation has been enhanced to support mixed case tags, consolidated attributes and optional structure and/or attributes. 'Cupid' is now capable of managing most XML input and output formats directly in SAP with the ability to communicate with Http, Web Services and NetWeaver XI.

Other Resources:

Support

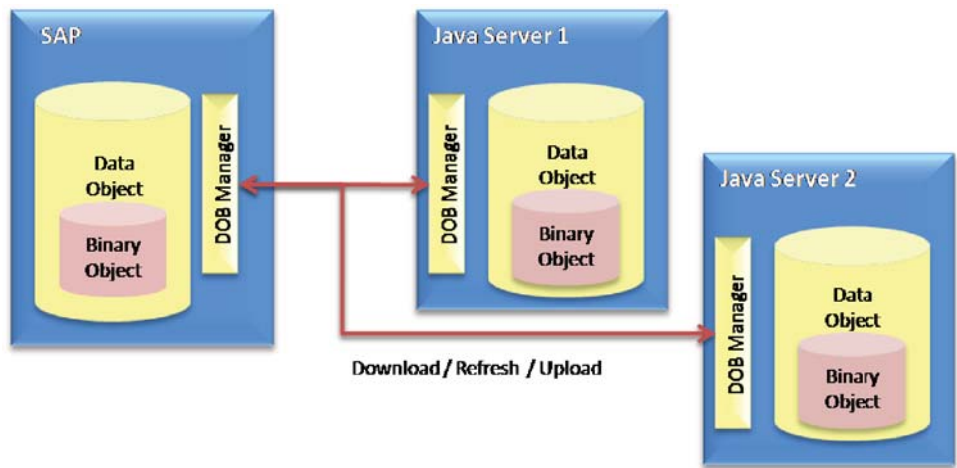
STAR@skytechnologies.com

More Information

info@skytechnologies.com

Sky Company Website

www.skytechnologies.com



In addition, new functions are provided in the Java and ABAP programming API's to more easily create, maintain and delete Binary Objects. This considerably simplifies development and effectively abstracts the underlying internal mechanisms away from custom program code.

What's in the pipeline?

January 2010 (release 21)

- Workbench action lists (screen scripting language)
- Presentation Client consolidation:
 - Uniform functionality across all platforms
 - Java Server on Symbian
 - SkyDB on BlackBerry
- Advanced screen GUI controls
 - Visual length / fonts / sounds
 - Embedded graph controls
 - Messages
- Full SkyConnect integration (LDB/DOB)
- Single sign on and built-in security models

Release 20 summary video and software

As of release 20, the software will be available for download from the Sky Knowledge Base which is an option off the Sky STAR portal. Select the 'Software Releases' subject to display what is available. The Release 20 software will also be available on the Sky FTP site, but this will no longer be used from 2010.

Sky will no longer host a web cast of the release, but will provide a video summary of all the new features. This format can be more effectively distributed and viewed independently. The video will be made available on the 15th of October and can also be downloaded from the STAR Knowledge base.

© 2009 by Sky Technologies Pty Ltd. All rights reserved. SkyConnect, SkyMobile, ECS, TSX, VTI, JBO and Sky Technologies products and services mentioned herein as well as their respective logos are trademarks or registered trademarks of Sky technologies in Australia. All other product and service names mentioned are the trademarks of their respective companies. Data contained in this document serves informational purposes only. Product specifications may vary. These materials are subject to change without notice. These materials are provided by Sky Technologies and its affiliated Partners for informational purposes only, without representation or warranty of any kind, and Sky or its partners shall not be liable for errors or omissions with respect to the materials. The only warranties for Sky Technologies products and services are those that are set forth in the express warranty statements accompanying such products and services, if any. Nothing herein should be construed as constituting an additional warranty.